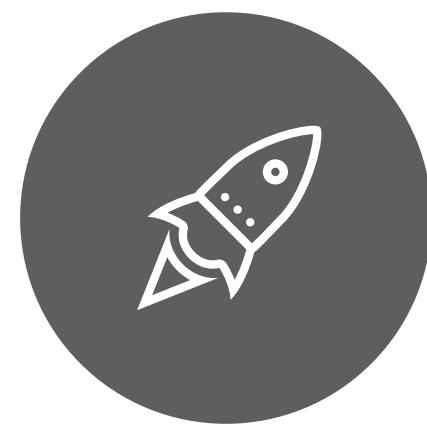




TECHNOLOGY AND INNOVATION BRILLIANTLY BLENDED



WE

ASPIRE - **A**DAPT - **A**DVANCE - **A**CHIEVE

We turn your ideas & ventures into reality.

ABOUT **WHO WE ARE?**

We are 4A Labs, your innovative technology solutions partner. We are a team of highly experienced managers, technical architects, engineers, developers, analysts, data scientists and designers who work around the clock to deliver software and hardware solutions that will reduce your costs, increase your visibility and save time during your decision making process. We know one size doesn't fit all, thus, we tailor knowledge, experience and technology just for your needs



OUR EXPERIENCE

OVER 50 YEARS

Our managing partners have over 45 years of combined Experience & Expertise in Enterprise Level Software & Platform Development, Mobile Application Design & Development, e-Commerce, BI, Big Data Analysis, B2C/B2B, CMS, CRM, ERP, AI and IoT Solutions. All our projects follow Agile & Scrum Software Development & Project Management,

OUR COMPANY IN NUMBERS

100+ / 150+ / 60+ / 5

Members

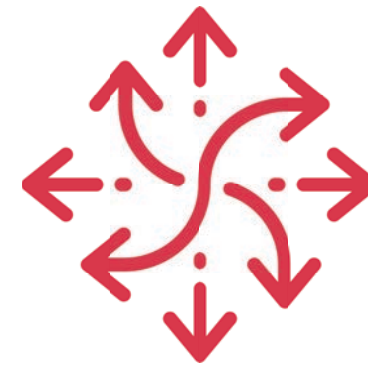
Projects

Clients

Awards

Our Capabilities

Our value and promise to our clients & partners is to be their long term “in-house” IT, Digital and Creative Service Partner for their ventures and enterprises by offering in-budget, on-time, and agile IT solutions.

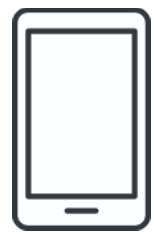


Internet of Things (IoT) Programming
Artificial Intelligence (AI) Programming
Hardware Embedded Programming
Wearable Programming
User Experience (UX)
User Interface (UI)
3D Modeling & Programming
Search Engine Optimization (SEO)

Web and Mobile Design & Development
CRM, ERP & e-Commerce Platform Dev.
Backend Integration & Development
Service Oriented Architecture (SOA) Web
Services Dev. & Integration
Database Design & Development
System & Business Analysis
Enterprise Level Architecture

Our Technology Expertise

Our strength and proficiency in the following areas of technology enable our clients & partners to grow their businesses much faster, steadier and scalable



Mobile Development

iOS (Objective-C, Swift)

Android (Java)

React Native

Flutter

Xamarin

Ionic



Front-End Development

CSS/HTML5

Javascript, Ajax/jQuery, Dojo JS,
ReactJS, AngularJS, jQuery
Mobile

Responsive Design (e.g.
Bootstrap)

JSON/XML/REST & RESTFULL

APIs/Web Services



Web Development

Go Lang

Node.JS

.NET - C#/ASP.NET

PHP

Ruby on Rails

Java

Python



Database Architecture

Oracle

MS SQL Server

MySQL

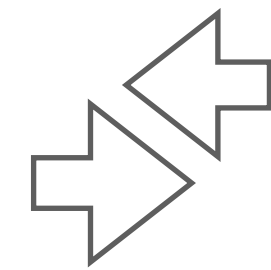
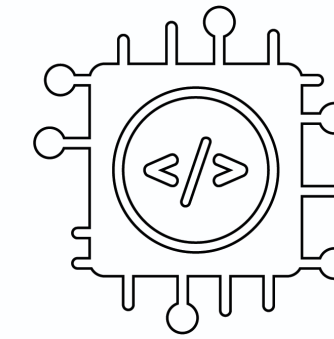
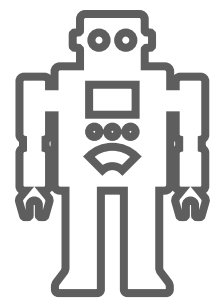
PostgreSQL

NoSQLs

(CouchDB, MongoDB)

Our Technology Expertise

Our strength and proficiency in the following areas of technology enable our clients & partners to grow their businesses much faster, steadier and scalable



AI, Machine Learning & Neural Net

Neural Networks
Computer Vision
YOLO
Tensor Flow
DarkNet
Object Classification

Internet of Things (IOT)

Indoor Positioning
Outdoor Positioning
Custom Hardware Design
WiFi / GPS / RF Applications
Wearable Programming

Embedded System Design & Development

Custom PCB design
IC architectures: ST, ARM,
ATMEL, FPGA / Zynx, ASIC
Video/Image Processing
Algorithms
Sensor and I/O Integration
Advanced Communication
Protocols

Integration Solutions

ERP (SAP, IFS, JD Edwards, etc)
Legacy Systems
AS/400
Scada - PLC
3rd Party Systems

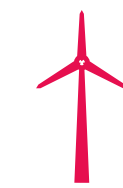


Our Sectors

As a full-service technology and creative solutions provider, we service multiple sectors and industries while working with some of the leading enterprises in their fields.



GOVERNMENT



ENERGY



FINANCE



TELCO



RETAIL



AUTOMOTIVE



GLOBAL TRADE



TOURISM



MANUFACTURING



SPORTS



TRANSPORTATION



HEALTH



FMCG



REAL ESTATE

Our Custom Solutions

As a full-service technology and creative solutions provider, we rigorously manage operations, focus on quality and operational excellence, while offering competitive pricing. We build lasting partnerships based on trust and transparency. We tackle business problems with intelligence. We use cutting-edge technology and creativity to achieve unparalleled results.



**Customer
Relationship
Management (CRM)**



**B2C / B2B
E-Commerce**



**Distributor
Management**



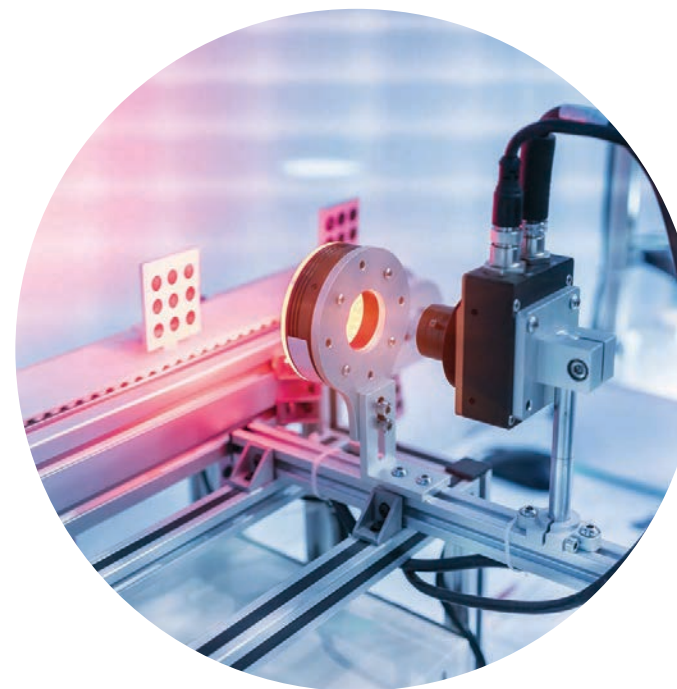
**Health & Safety
Systems**



**Cyber
Security**



**Procurement
Management**



**Computer
Vision**



**Planning &
Forecasting
Systems**



**Core Banking &
Payment Systems**



inContact

Contact Tracing & Reporting System



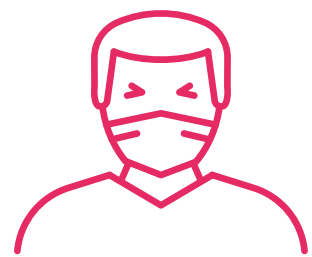
 4A Labs

inContact

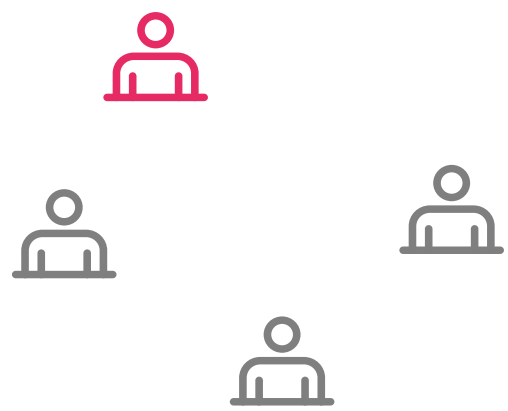
What is It?



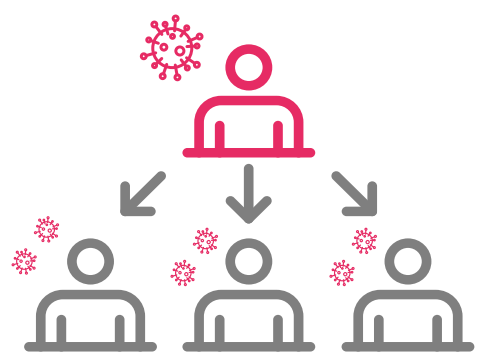
It enables people to protect their social distances in the workplace with the notification mechanism.



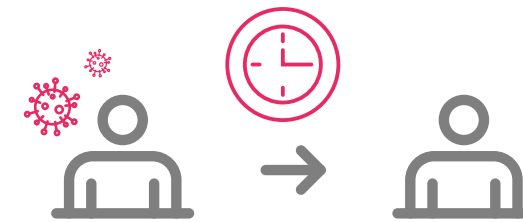
Increases Awareness on Social Distancing.



With the low energy WIFI & RF technology, it can monitor contact without location tracking.



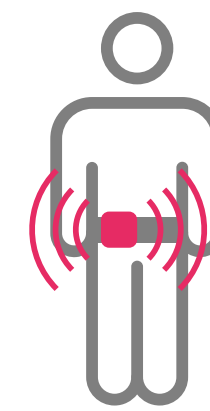
Reports workers in close proximity when an infection occurs and automatically identifies risk groups.



It measures interactions and provides historical reporting.



Adapts to all conditions with its quick and easy set up and monitoring solutions.



Wearable hardware can be used by attaching it to the belt or safety vest.



With anonymous user profiles, it enables risk management without tracking.

inContact

How Does It Work?

Tracks the proximation of your employees with each other using a light-weight RF device.

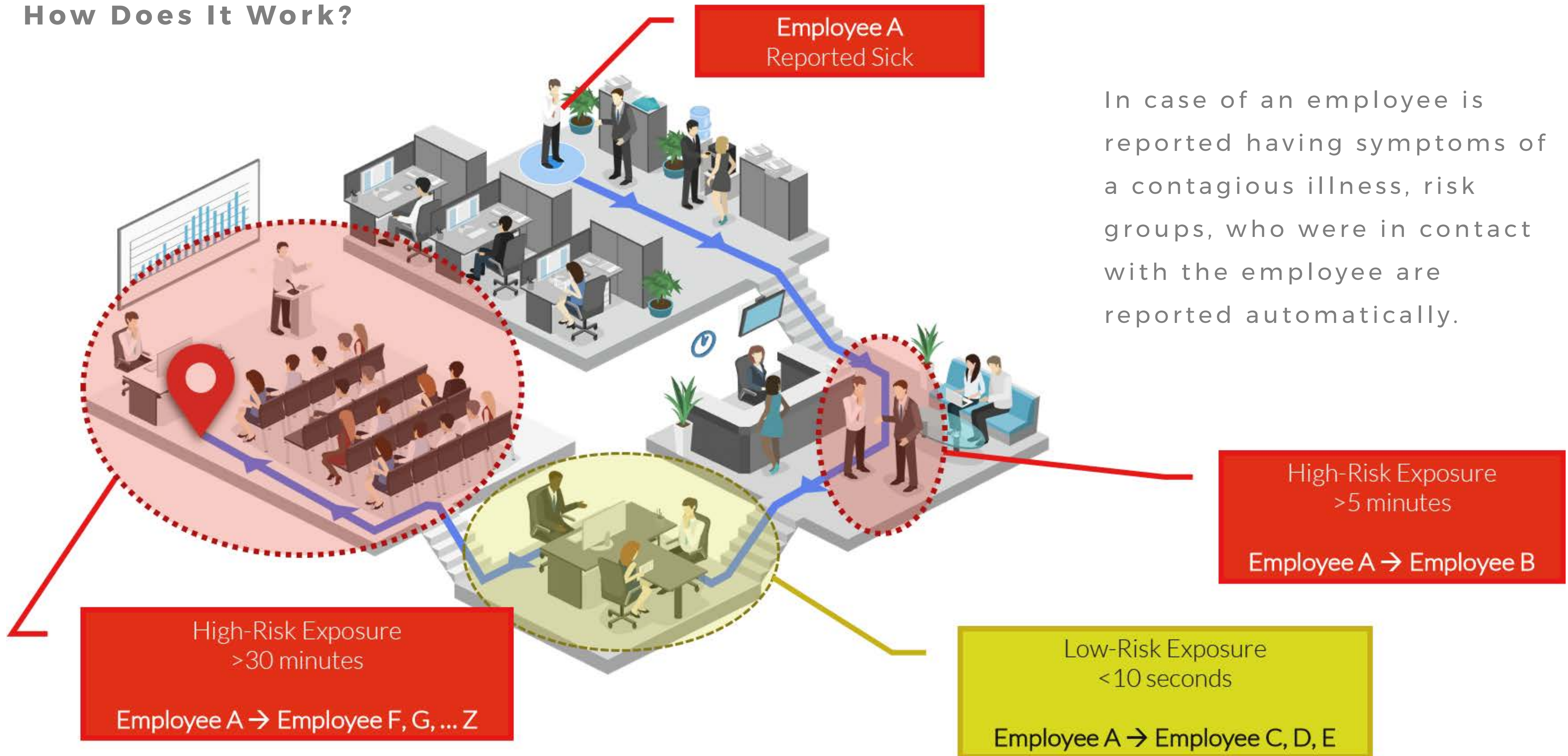
Calculates the distance of proximation and time of exposure.

Can precisely monitor proximation in a group of people.



inContact

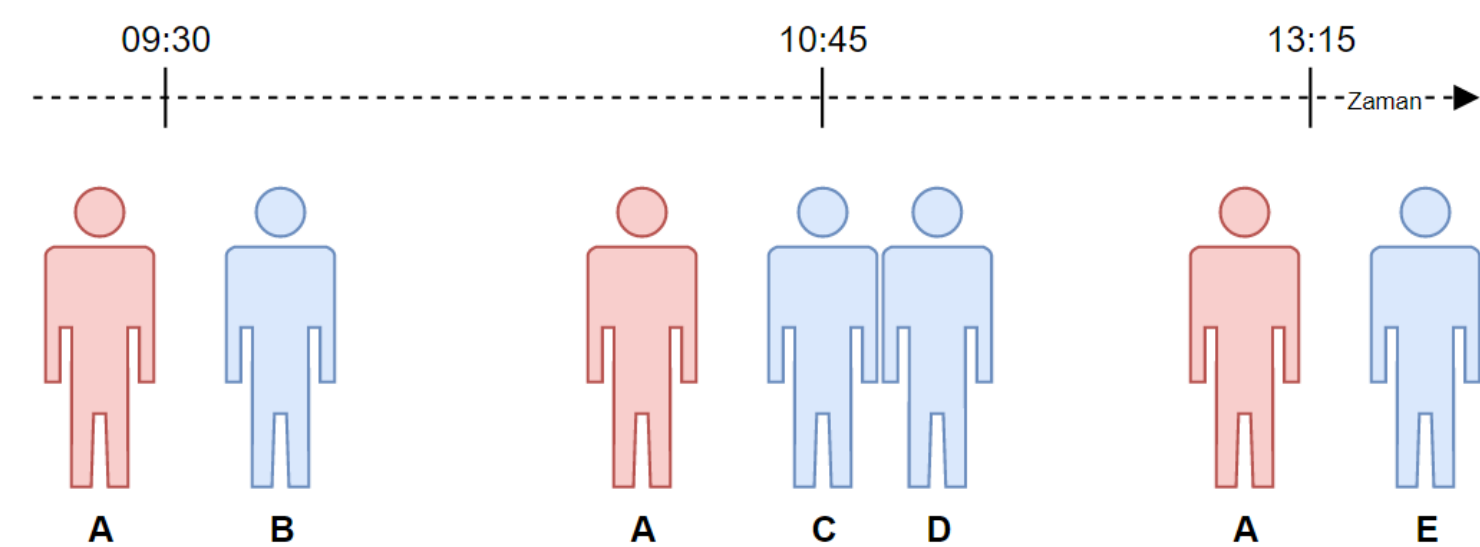
How Does It Work?



inContact

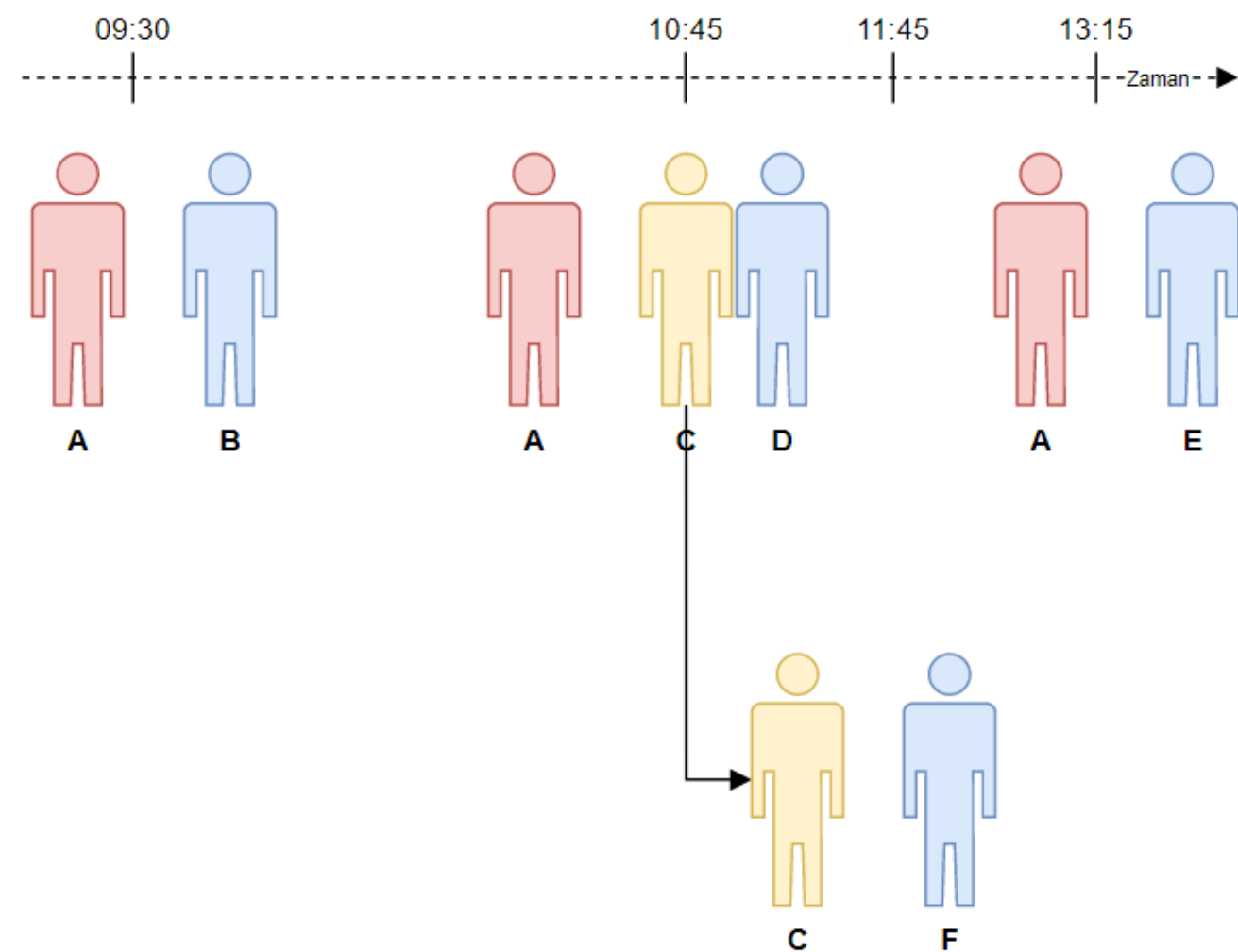
Risk Group Identification

Linear Identification



Employee A is directly in contact with Employees B,C, D and E.
B, C, D and E are in Risk Group

Nested Identification

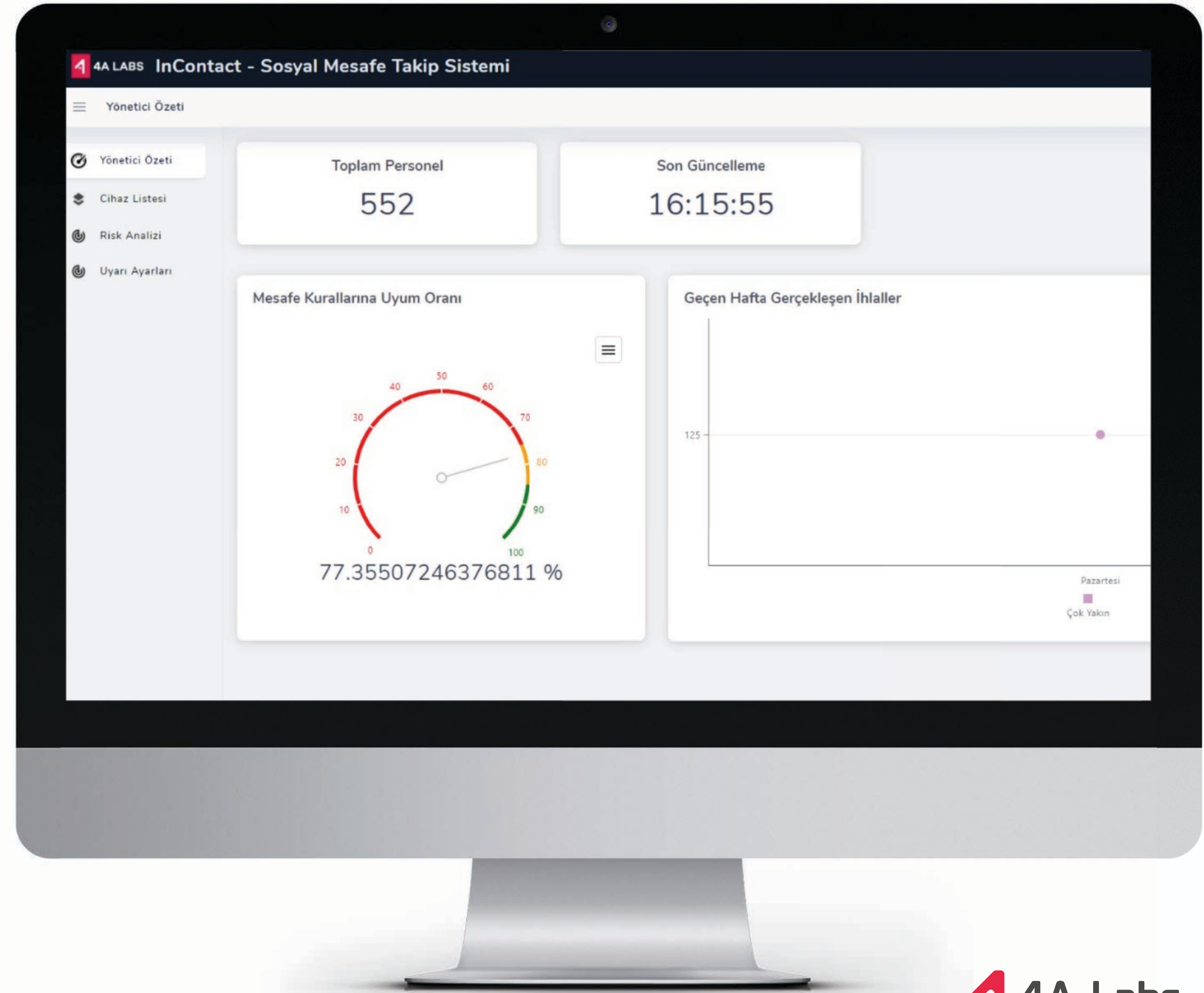


Employee A is directly in contact with Employees B, C, D and E.
Employee C was in contact with Employee F.
B, C, D, E and F are in Risk Group

inContact

Control Panel

inContact Control Panel screen provides the opportunity to evaluate against the risks of infectious disease and ensures that necessary measures are taken.

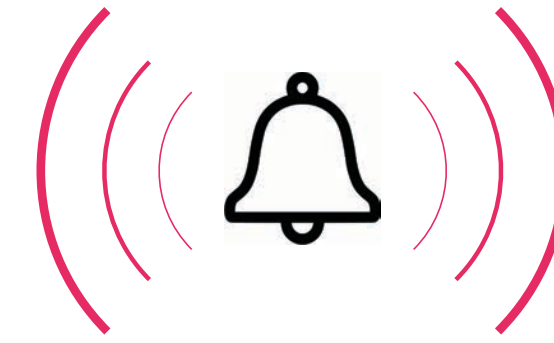
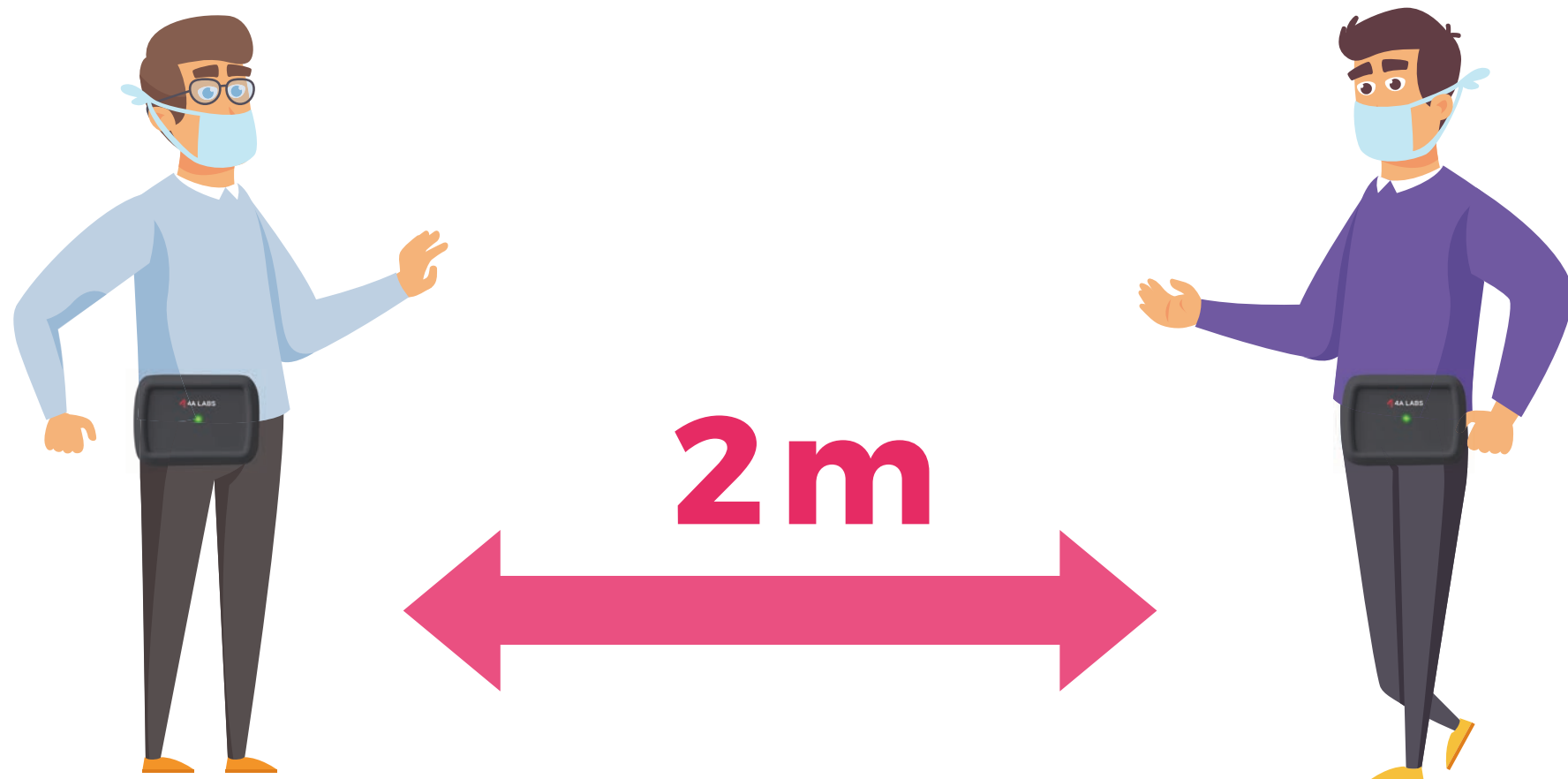


inContact

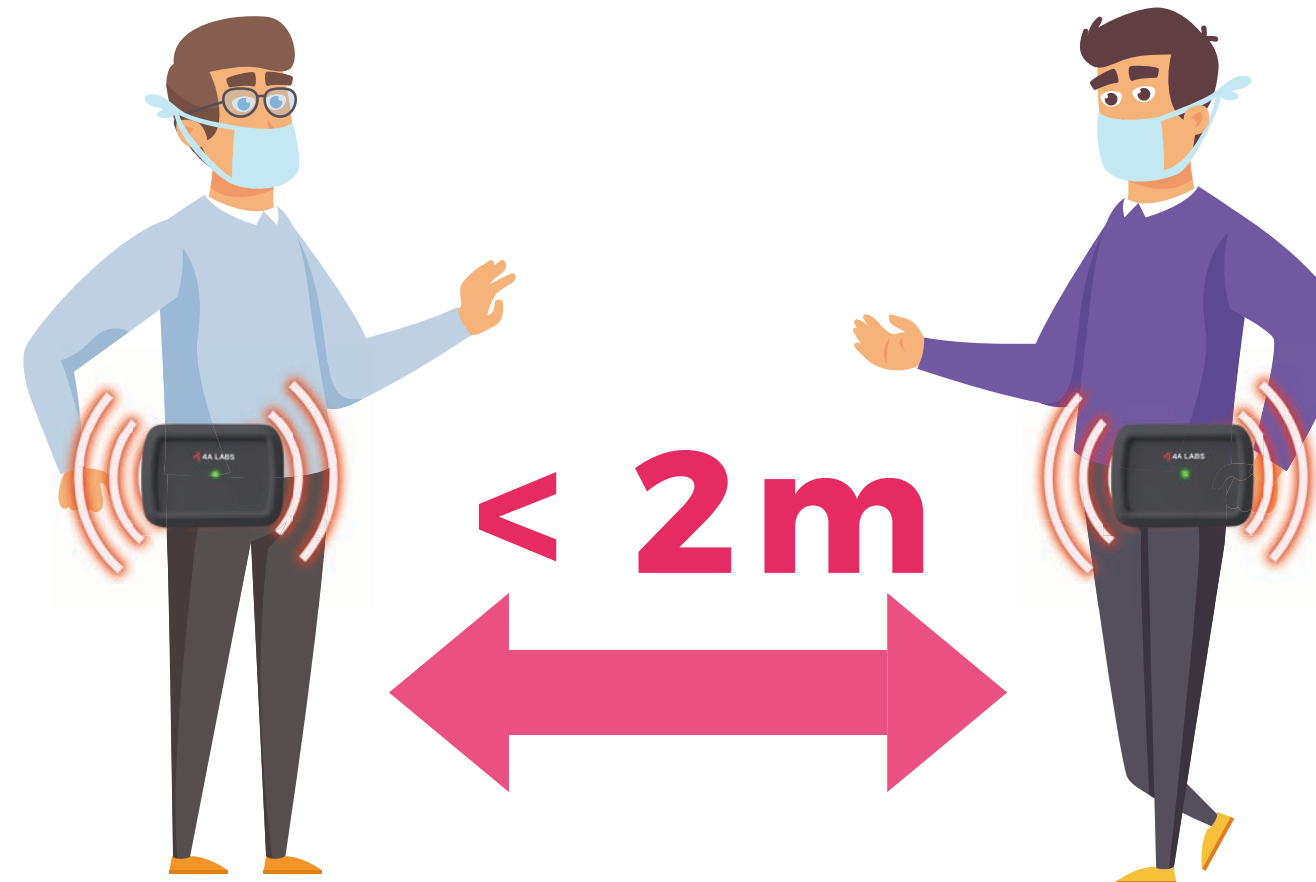
Automated Notifications



Social Distance

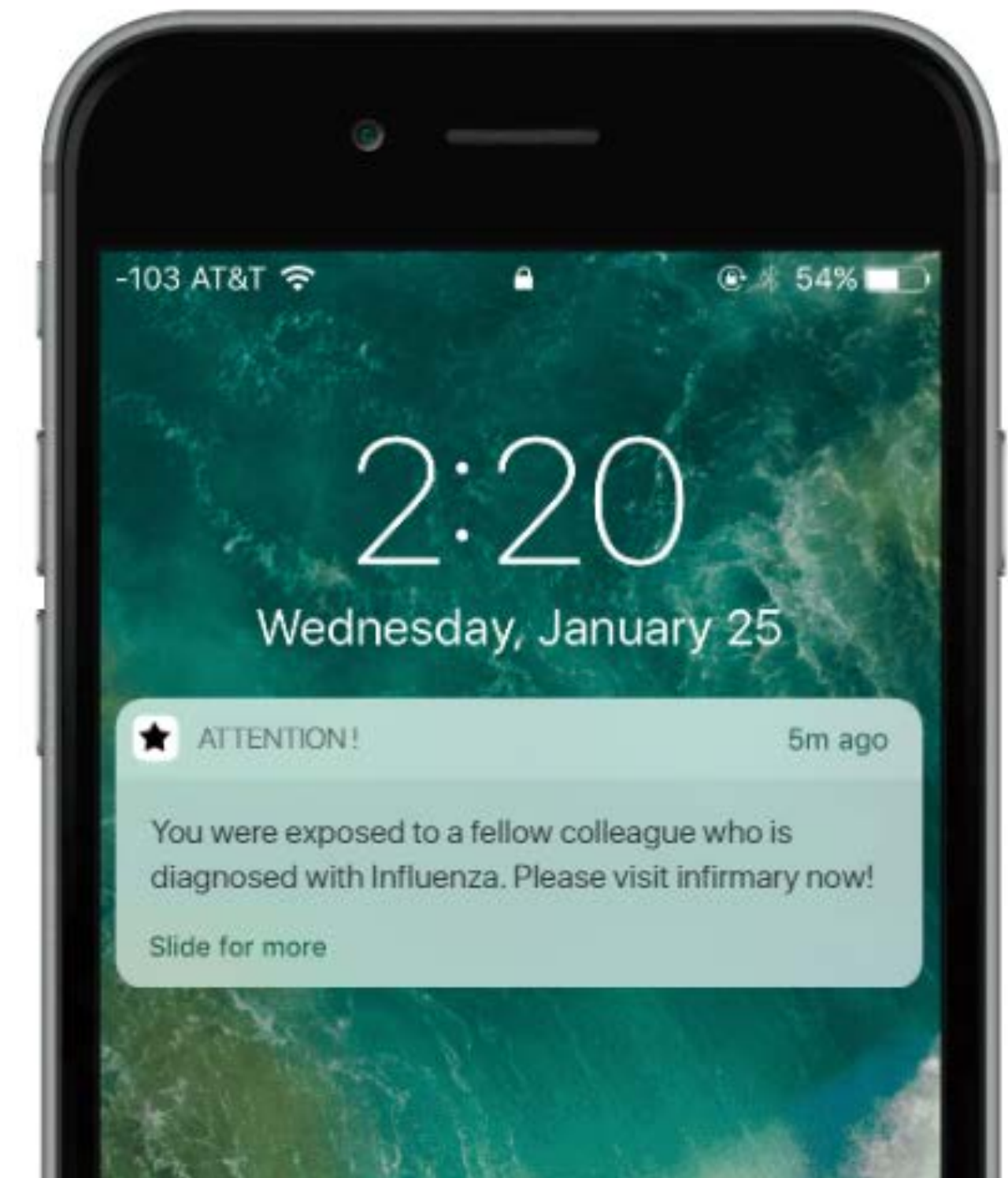


Risky Distance



inContact automatically notifies employees who are in a risk group via

- **Push Notifications**
- **SMS**



inContact - CART

Shopping Cart and Basket Social Distance Checker

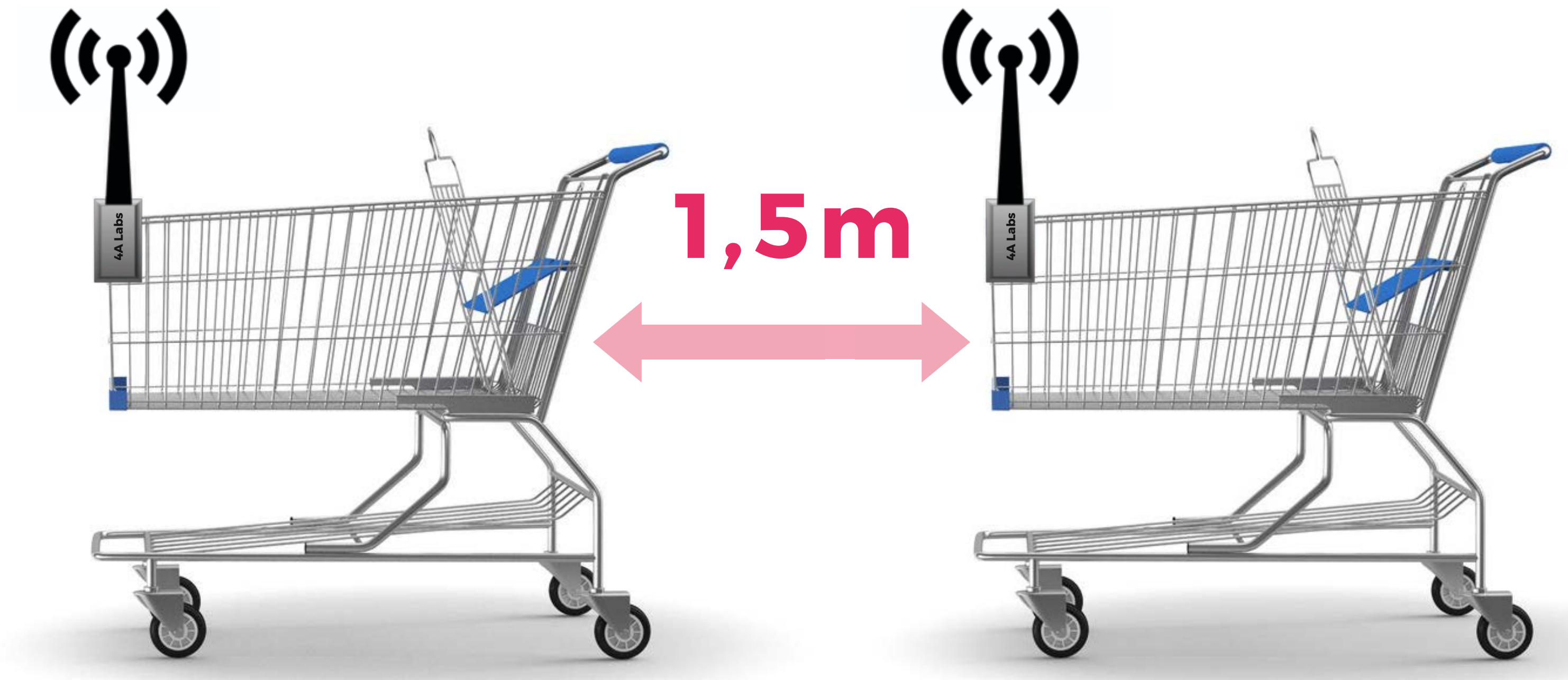
Alert shopping carts and baskets in close proximity. inContact-CART is the ultimate passive alert system to ensure a safe distance of your customers at your shop floors



inContact - CART

Distance Checker

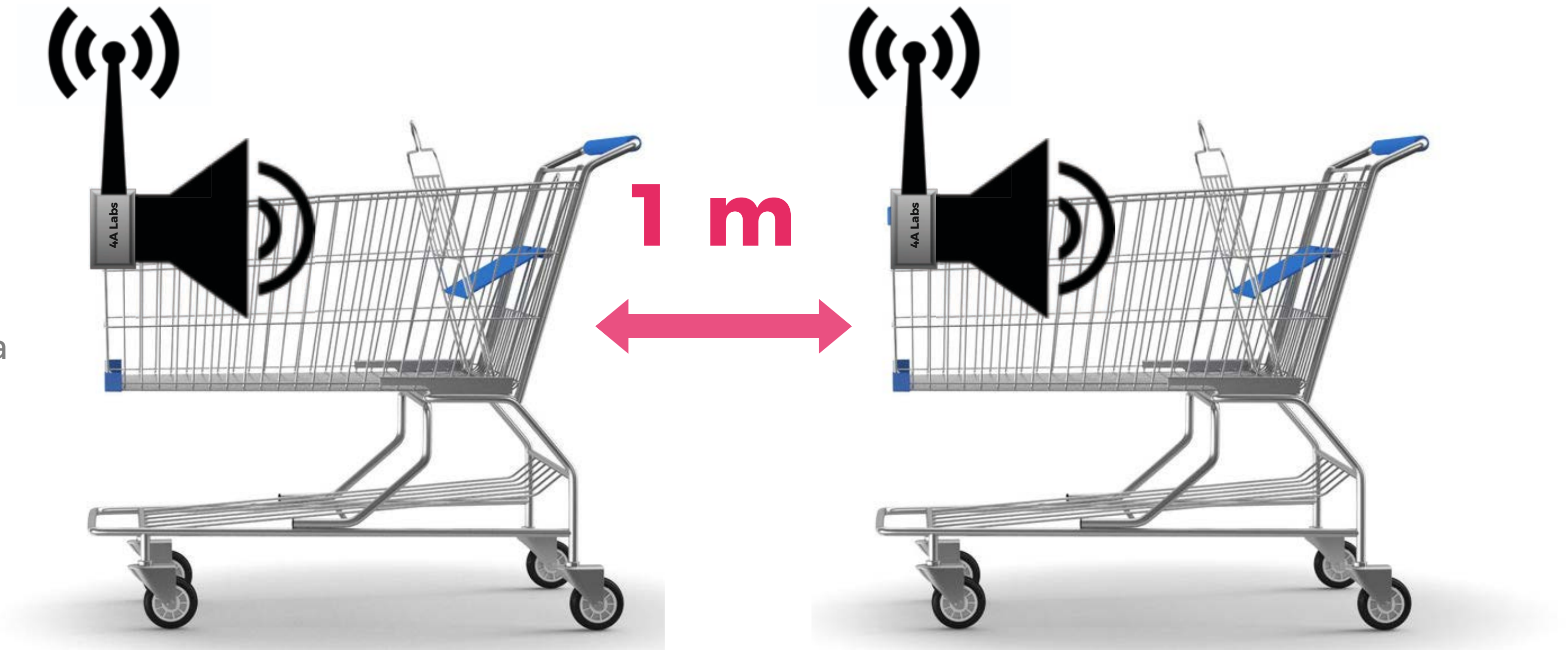
Using Radio Frequency technology, inContact-CART measures the accurate proximation of each cart to other carts in a predefined range



inContact - CART

Audio Alerts

In case two carts are in close proximity to each other, an audio warning is triggered until the carts are moved to a safer distance



inContact - CART

Multi Orientation and Variant Operation

RF hardware is able to accurately
operate in multi-orientation operation
with different variants of shopping carts
and baskets



inContact - CART

Features

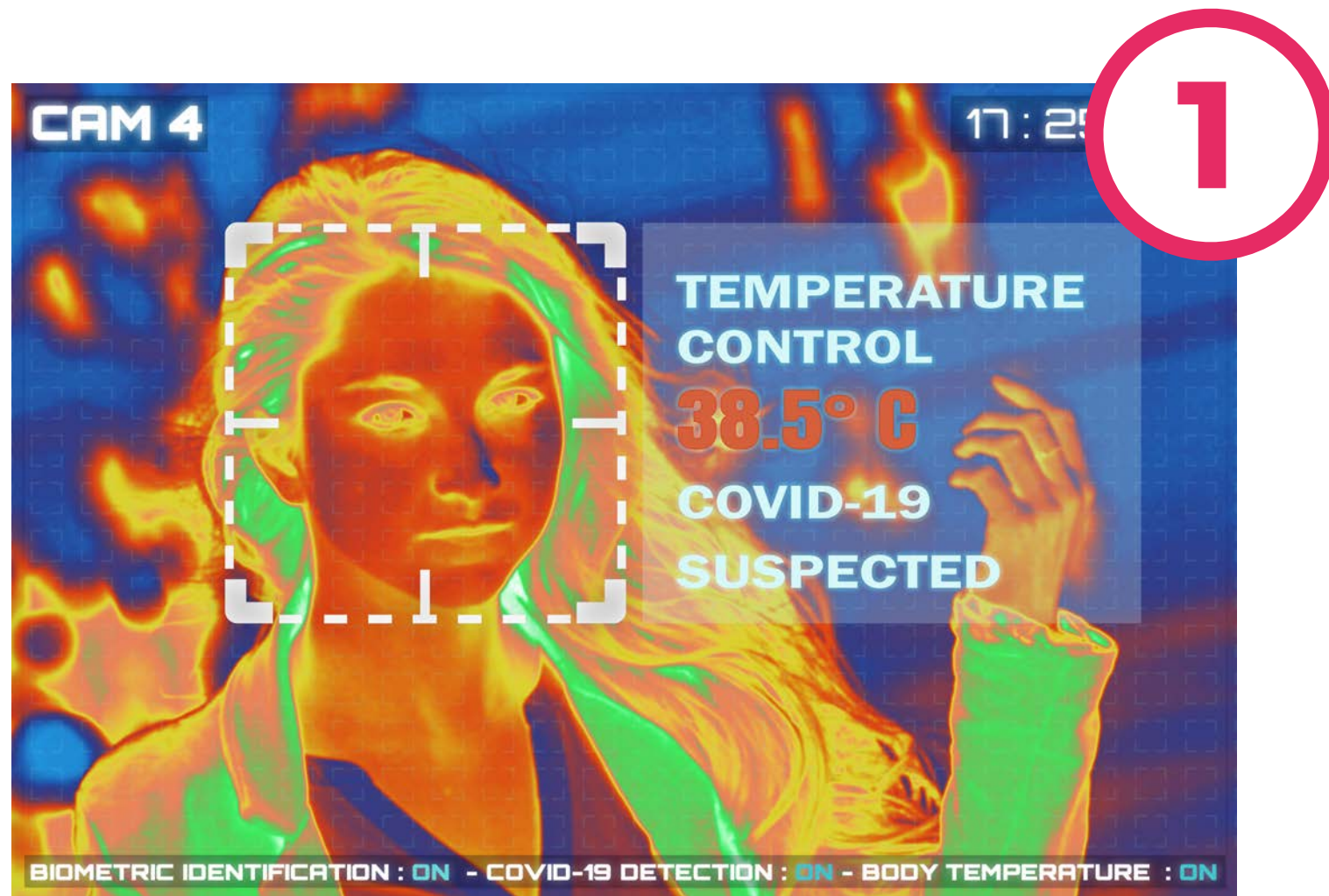
RF hardware encloses high-tech features

- Low power RF transceivers with no antenna design
- Battery operated with up to 15 days of constant use on a single charge
- USB 5V standard charging connector
- Software update through USB port
- Piezo or Passive Buzzer
- Red LED to display close proximity
- Auto shut-down in cart parking area



inContact - THERMAL

Continuous Fever Monitoring



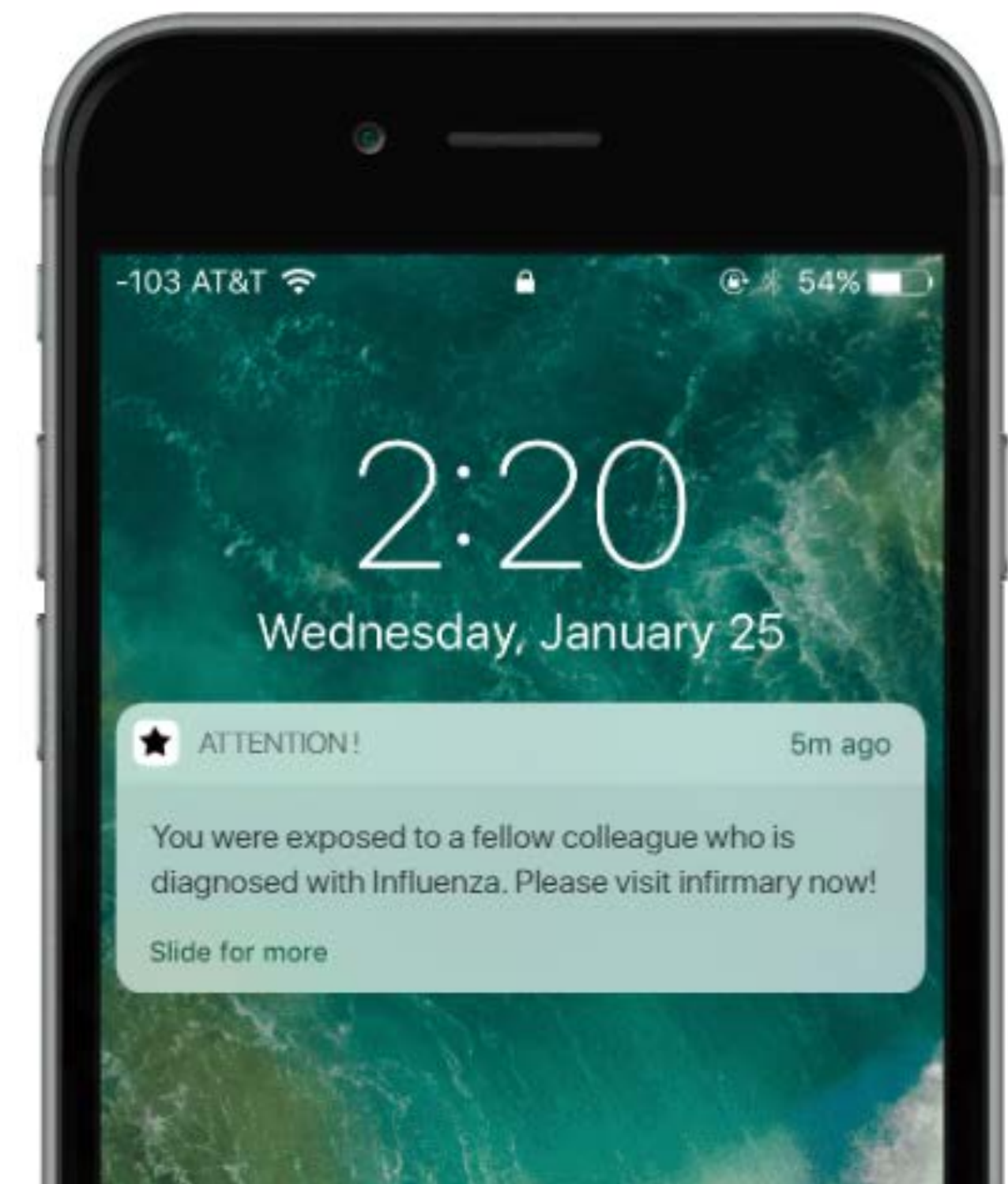
Identifies high body temperature from face using inContact infrared module



Matches the face from employee records using advanced AI algorithms

3 Notifies supervisors with potentially sick employees via;

- **Push Notifications**
- **SMS**
- **E-Mail**



Our Clients



Get in Touch With Us



LOCATIONS

MIAMI, FL/USA
ISTANBUL/TURKEY
ANKARA/TURKEY
SANTIAGO/CHILE
LIMA/PERU
SÃO PAULO/BRAZIL

www.4alabs.io

PHONE

US: +1 786 713 2697
TR: +90 212 282 83 85

CONTACT US

info@4alabs.io

FOLLOW US

Facebook

Twitter

Linkedin

Crunchbase